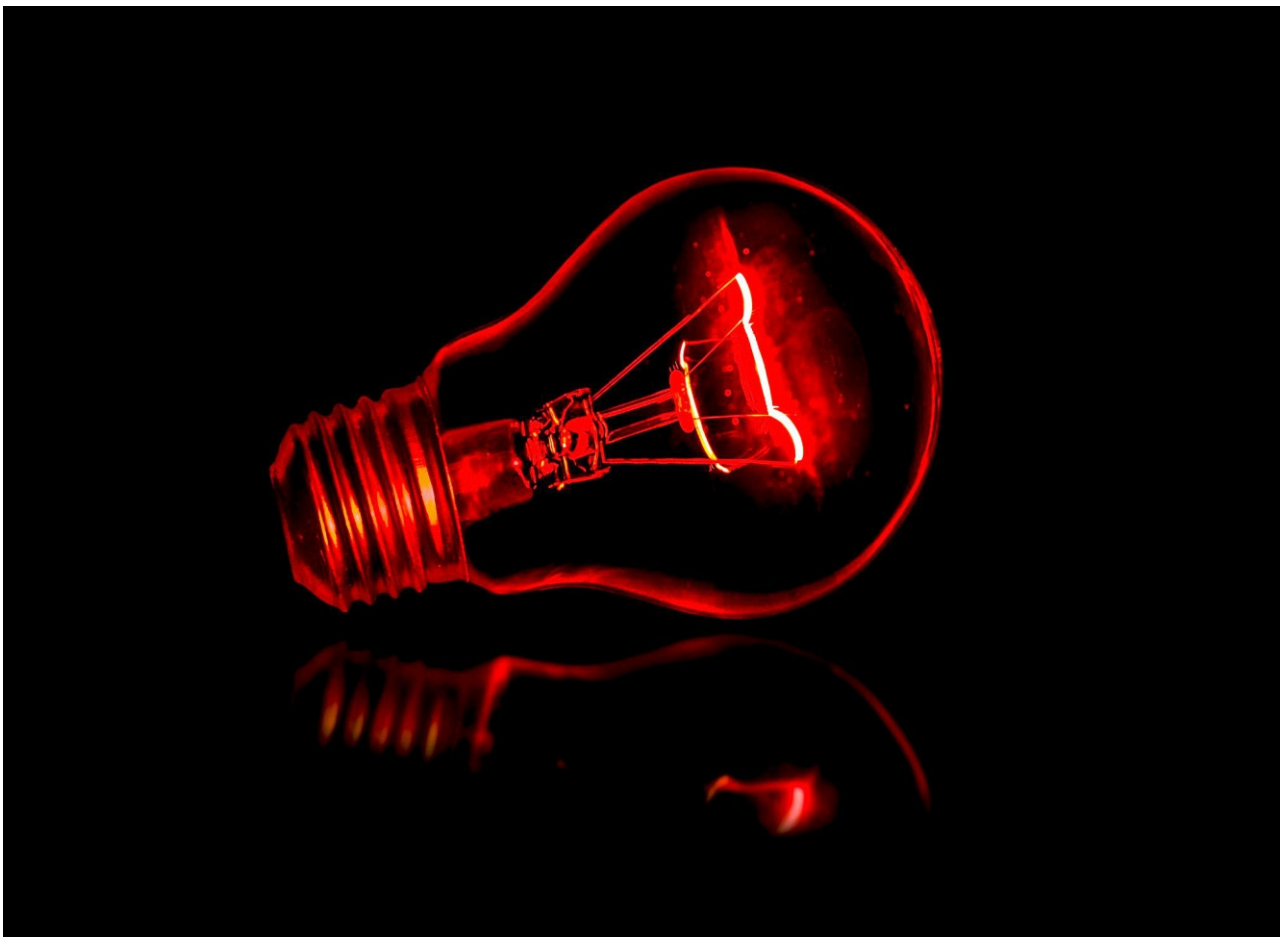




Tax Faculty Course Brochure

Contents

About WTS Tax Matrix Academy	03
Tax Faculty Course Portfolio	04
Certified Tax Mastery Professional (CTMP)	05
Tax Practice Management Courses (TPMC)	06
Sectorial Tax Courses (STC)	07
One-Day On-Site Courses (ODSC)	08
Certifications & Outcomes	09
Training Delivery options	10
Investment & Registration	11
Training Calendar	12



About WTS Tax Matrix Academy

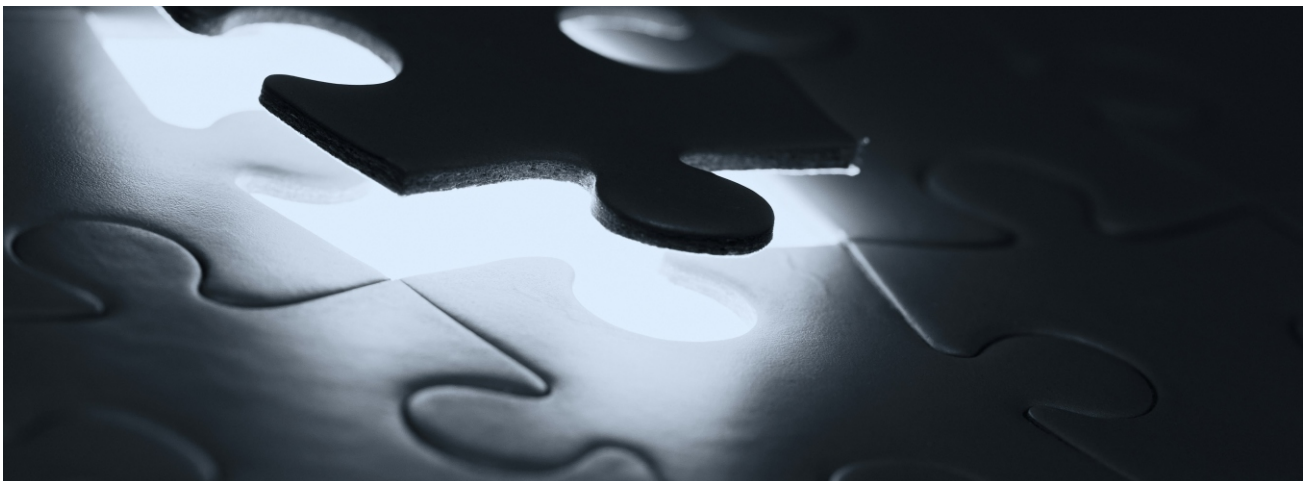
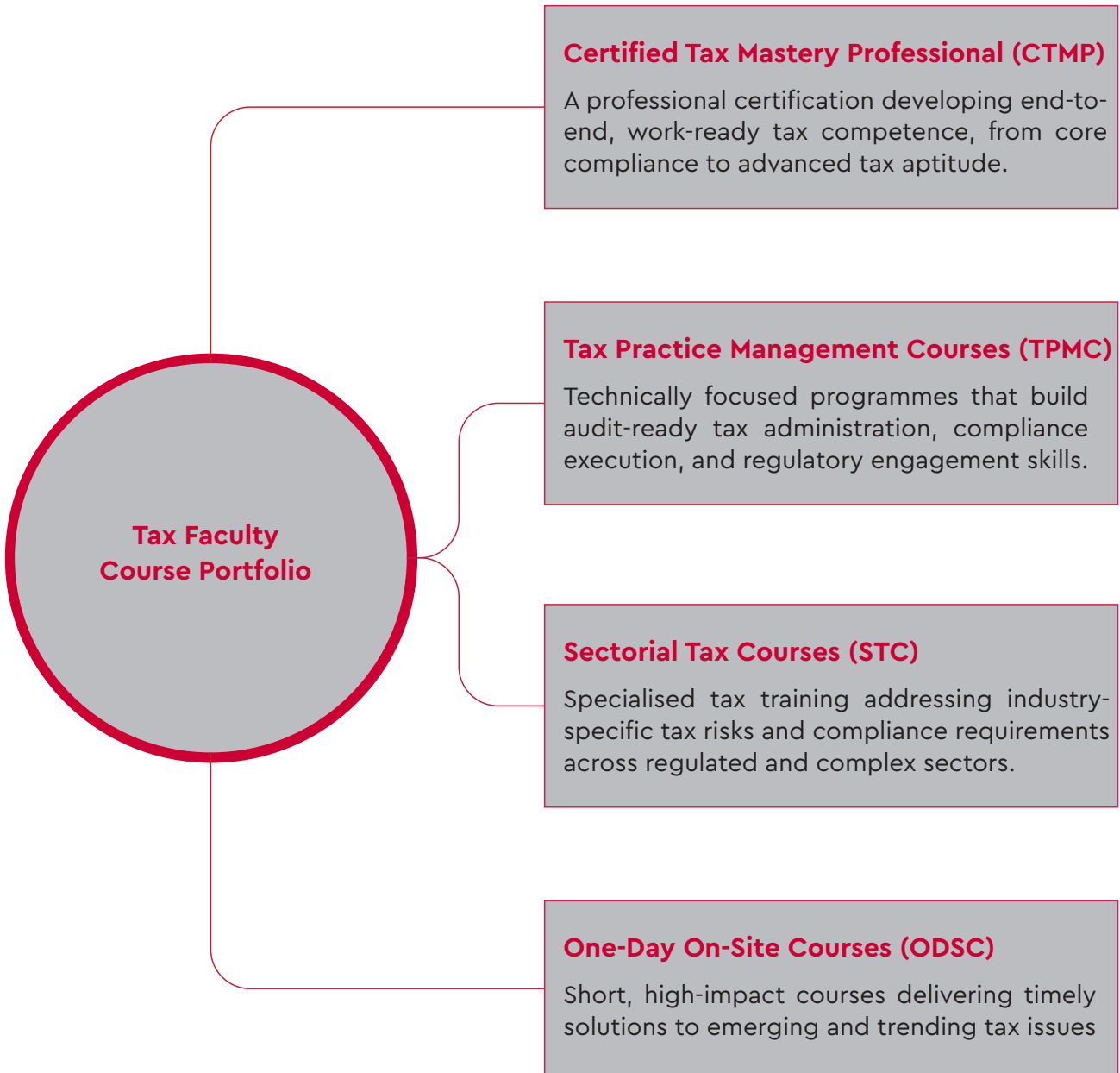
WTS Tax Matrix Academy is a tax training institution delivering certified, accredited and CPD-aligned programmes. We are registered with the Zimbabwe Ministry of Higher and Tertiary Education, Zimbabwe Open University (ZOU) certified, South African Institute of Taxation (SAIT) accredited, ACCA, ICAZ and ADIT pathways aligned, WTS Global professional network member, CPD-aligned, and supported by strong engagement with ZIMRA and other regulators. We pride in equipping professionals and organisations with practical, work-ready tax capability, audit readiness, and skills to engage effectively with tax authorities. Tax Matrix Academy consists of the Tax Business School and the Tax Faculty.

The Tax Business School is a leading commercial training centre renowned for delivering cutting-edge, practical and compliance-focused tax education across Africa and beyond. Through a dynamic calendar of seminars, newsletters, monthly tax updates, webinars, conferences and customised training programmes, it empowers professionals with the expertise to navigate and excel in the ever-evolving world of taxation.

The Tax Faculty is a premier workplace and occupational training hub that offers structured short courses in tax, books publications, tax research and tuition support aligned to professional learning pathways. Our programmes are designed to bridge the gap between tax theory and real-world application ensuring work-ready competence. The next sections give more details about our 4 structured learning pathways — Certified Tax Mastery Professional (CTMP), Tax Practice Management (TPMC), Sectorial Tax Courses (STC), and One-Day On-Site Course (ODSC) Programmes — through which we deliver tax training that is relevant, applied and regulator-aware.



Tax Faculty Course Portfolio



Certified Tax Mastery Professional (CTMP)

The Pathway to Professional Tax Certification

Programme Overview

CTMP is an intensive 12-month professional tax qualification designed to develop end-to-end work-ready tax competence. It equips participants with practical skills required to perform key tax functions across compliance, reporting, advisory, audits, and dispute resolution. It goes beyond theory and focuses on real-world application of tax law. The programme is open to individuals seeking practical skills and proficiency to manage tax matters across compliance, advisory, and regulatory environments. The programme structure allows participants to earn stand-alone professional certificates, accumulative towards the full CTMP designation.

Programme Structure

The CTMP is structured around two progressive learning components:

1. Tax Masterclasses

Foundation Level

Participants to complete six (6) Tax Masterclasses in core areas of taxation, that build strong technical foundations required for professional tax practice. Modules include:

- Master Payroll Tax
- Master Value Added Tax (VAT)
- Master Capital Gains Tax & Estate Planning
- Master Corporate Income Tax
- Master Tax Audits & Disputes
- Master Tax Returns Preparation

2. Advanced Tax Courses

Specialisation Level

Participants must successfully complete two (2) Advanced Tax Courses, including:

- Business Tax Strategy – Advanced (Compulsory)
- One additional elective from:
 - › Corporate Tax Structuring – Advanced,
 - › International Tax – Advanced
 - › Transfer Pricing – Advanced



Flexible Learning Pathways

Participants choose between:

- Conventional Route: A structured, cohort-based learning pathway delivered sequentially.
- Self-Paced Route: A flexible option allowing participants to complete courses at their own pace, with credits accumulating toward CTMP certification.

Tax Practice Management Courses (TPMC)

Building Competent, Audit-Ready Tax Practices

Programme Overview

The Tax Practice Management Courses (TPMC) are professional programmes designed to strengthen technical tax administration, compliance management, and execution capability within tax practices and in-house tax functions. TPMC programmes are practical, regulator-aware, and aligned with Zimbabwean tax law and compliance expectations.

Each course is offered as an 8-week stand-alone professional programme, allowing participants to build targeted competence based on their role and experience level. The program is open to those seeking to strengthen practical tax compliance capability, improve documentation and audit readiness, and effectively manage regulatory engagement.

Programme Structure

The TPMC is structured across three complementary courses that allow participants to progress from foundational to advanced application.

1. Managing Tax Practice – Basic

Provides foundational competence in tax administration and compliance

2. Managing Tax Practice – Advanced

Focuses on complex tax compliance and audit management

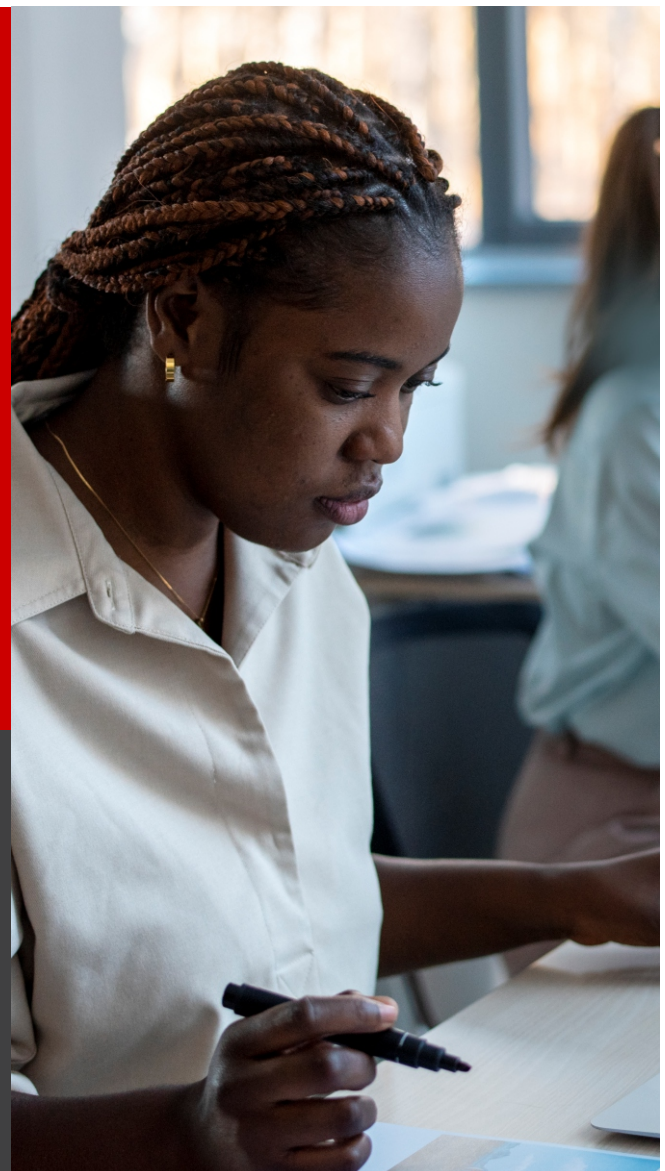
3. Accounting for Tax in Financial Statements

Bridges tax law and financial reporting.

Learning Pathways

Participants may:

- Enrol in individual courses based on experience level
- Progress from Basic to Advanced for deeper competence
- Select Accounting for Tax in Financial Statements as a specialist technical course



Sectorial Tax Courses (STC)

Specialised Tax Competence by Industry

Programme Overview

The Sectorial Tax Courses (STC) are specialised professional programmes that address the unique tax risks, compliance requirements, and audit exposure of specific sectors of the economy. Each course focuses on sector-specific application of tax law, combining technical knowledge with practical case scenarios drawn from real industry contexts. They are open for organisations and professionals operating in special regulated sectors. Courses are offered as stand-alone workplace training programmes, allowing participants to develop deep, niche tax expertise aligned to their industry.

Programme Structure

Each Sectorial Tax Course is industry-specific and stand-alone, focused on practical tax application and compliance, delivered over 6–8 weeks and available through online, physical, or hybrid delivery. Each course addresses sector-specific income streams, VAT treatment, payroll issues, withholding taxes, compliance risks, and audit focus areas.

Sectorial courses on offer:

- NGOs & Donor Funded Projects Tax
- Public Sector Tax Administration
- Financial Services Sector Taxation
- Insurance Industry Taxation
- Real Estate Taxation
- Extractive & Mining Industry Taxation
- MNOs & Digital Services Taxation

Learning Pathways

Participants may:

- Enrol in a single sector-specific course
- Build multi-sector expertise by completing multiple STC modules
- Participate through corporate or institutional group enrolment



One-Day On-Site Courses (ODSC)

Focused, High-Impact Tax Updates on Emerging and Trending Issues

Programme Overview

One-Day On-Site Courses (ODSC) are short, intensive tax workshops designed to provide rapid upskilling on specific trending tax issues, regulatory updates, and emerging risk areas. They are programmes tailored for professionals and organisations that require immediate, practical solutions without committing to long-duration courses. ODSCs focus on current compliance challenges, audit readiness, and regulatory developments, ensuring relevance and immediate application. Courses are primarily delivered on-site, with virtual options available where appropriate, and may be customised to organisational or sector-specific needs.

Programme Structure

Each ODSC programme is:

- Delivered over one intensive day
- Topic-specific and outcome-driven
- Highly practical and discussion-based
- Designed for immediate workplace application

Typical Areas of Focus

- Emerging tax issues, risks and regulatory developments
- ZIMRA high tax risk focus areas
- Technical tax issues
- Global tax trends
- ZIMRA focus areas and tax law updates

Participation Options

Participants attend through:

- Corporate or institutional on-site delivery
- Customised training sessions aligned to organisational needs
- ODSC delivered on site at WTS Tax Matrix Academy



Certification and Outcomes

All Tax Faculty programmes are CPD-aligned, professionally delivered, and supported by institutional certifications.

Certification Awarded	Conditions of Award
Certified Tax Mastery Professional Certificate	Completion via different CTMP routes
Tax Professional Certificate (TPC)	Completion of 6 Tax Master Class courses
Professional Certificate (PC)	Completion of any one Tax Master Class course
Applied Certificate of Competence (ACC)	Completion any one Advanced Courses
Tax Practice Management Course (TPMC) Certificate	Completion all 3 TPMC courses
Professional Certificate (PC)	Completion of any one TPMC courses
Applied Certificate in Sectorial Taxation	Completion of any one Sectorial Tax Courses (STC)
One-Day On-Site Courses (ODSC)	Certificate of Attendance (CPD-aligned)

Accreditations and Certifications



Pathways Aligned



Think Ahead



Training Delivery Options

Delivery

WTS Tax Matrix Academy offers flexible delivery options to accommodate organisational and professional needs:

- **Online Delivery**

Live interactive sessions delivered through a structured virtual learning platform, supported by digital learning materials and session recordings.

- **Physical (On-Site) Delivery**

Face-to-face sessions offering enhanced engagement, personalised tuition, access to the Academy library, and professional learning environments.

- **Hybrid Delivery**

Selected programmes combine online and physical sessions for flexibility and depth.

Calendar

- All programmes follow the official Tax Faculty Calendar, at the end of this brochure.



Investment & Registration

Investment

Programme investment is structured according to course level and delivery mode, with physical delivery reflecting added in-person value.

Course Level	Duration	Cost (USD) Per Course	Delivery Mode
Certified Tax Mastery Professional (CTMP) – Masterclass Courses	4 Weeks	\$200	Online
	4 Weeks	\$200	Physical
	6 Weeks	\$230	Online
	6 Weeks	\$230	Physical
Certified Tax Mastery Professional (CTMP) – Advanced Courses	8 Weeks	\$250	Online
	8 Weeks	\$250	Physical
Tax Practice Management Courses (TPMC)	8 Weeks	\$250	Online
Sectorial Tax Courses (STC)	8 Weeks	\$230	Online
	8 Weeks	\$230	Physical
One-Day Onsite Courses ODSC	1 Day	Customised	Customised

Registrations & Enquiries

Whether you are building internal tax capability, strengthening compliance, or developing future tax leaders, Tax Matrix Academy is your partner in structured, credible, and regulator-aware tax training.

- Enrolments are **OPEN** and courses commence in line with the official Tax Faculty Calendar (*provided at the end of the brochure*)
- Select your programme, preferred delivery mode and confirm intake calendar dates
- Register as an individual, corporate group, or institution
- Engage the Tax Faculty team for customised or in-house training options

Registrations & Enquiries

+263 782 802 384 [✉ marketing@taxmatrix.co.zw](mailto:marketing@taxmatrix.co.zw)

+263 778 363 600 [✉ vmadamu@taxmatrix.co.zw](mailto:vmadamu@taxmatrix.co.zw)

 No. 4 Church Road, Avondale, Harare

 www.wtstaxmatrixacademy.co.zw

wts taxmatrix
academy

Build Confidence. Strengthen Compliance. Master Tax.

Tax Faculty Calender 2026

Certified Tax Mastery Professional (CTMP)

A: Conventional			
Description	Start Date	End Date	Duration
Master Payroll Tax	18 February 2026	18 March 2026	4 Weeks
Master VAT Practice	26 March 2026	30 April 2026	6 Weeks
Master Capital Gains Tax & Estate Planning	04 May 2026	01 June 2026	4 Weeks
Master Corporate Income Tax	02 June 2026	14 July 2026	6 Weeks
Master Tax Audits & Disputes	15 July 2026	12 August 2026	4 Weeks
Master Preparation of Tax Returns	13 August 2026	10 September 2026	4 Weeks
Corporate Tax Structuring - Advanced	11 September 2026	30 October 2026	7 Weeks
Business Tax Strategy - Advanced	11 September 2026	30 October 2026	7 Weeks
International Tax - Advanced	02 November 2026	21 December 2026	7 Weeks
Transfer Pricing - Advanced	02 November 2026	21 December 2026	7 Weeks
B: Self Paced			
Description	Start Date	End Date	Duration
Corporate Tax Structuring - Advanced	18 February 2026	08 April 2026	7 Weeks
Business Tax Strategy - Advanced	18 February 2026	08 April 2026	7 Weeks
International Tax - Advanced	09 April 2026	28 May 2026	7 Weeks
Transfer Pricing - Advanced	09 April 2026	28 May 2026	7 Weeks
Master Payroll Tax	29 May 2026	26 June 2026	4 Weeks
Master VAT Practice	27 June 2026	08 August 2026	6 Weeks
Master Capital Gains Tax & Estate Planning	10 August 2026	07 September 2026	4 Weeks
Master Corporate Income Tax	08 September 2026	20 October 2026	6 Weeks
Master Tax Audits & Disputes	21 October 2026	18 November 2026	4 Weeks
Master Preparation of Tax Returns	19 November 2026	17 December 2026	4 Weeks

Tax Practice Management Course (TPMC)

A: Semester 1			
Description	Start Date	End Date	Duration
Managing Tax Practice - Basic	18 February 2026	15 April 2026	8 Weeks
Managing Tax Practice - Advanced	16 April 2026	11 June 2026	8 Weeks
Accounting For Tax in Financial Statements	12 June 2026	07 August 2026	8 Weeks
A: Semester 1			
Description	Start Date	End Date	Duration
Managing Tax Practice - Basic	04 July 2026	29 August 2026	8 Weeks
Managing Tax Practice - Advanced	30 August 2026	25 October 2026	8 Weeks
Accounting For Tax in Financial Statements	26 October 2026	21 December 2026	8 Weeks

Sectorial Tax Courses (STC)

A: Semester 1			
Description	Start Date	End Date	Duration
NGOs & Donor Funded Projects Tax	18 February 2026	01 April 2026	6 Weeks
Public Sector Tax Administration	18 February 2026	01 April 2026	6 Weeks
Real Estate Taxation	02 April 2026	14 May 2026	6 Weeks
Financial Services Sector Taxation	02 April 2026	14 May 2026	6 Weeks
Insurance Industry Taxation	15 May 2026	26 June 2026	6 Weeks
MNOs & Digital Services Taxation	15 May 2026	26 June 2026	6 Weeks
Extractive & Mining Industry Taxation	29 June 2026	10 August 2026	6 Weeks
B: Semester 2			
Description	Start Date	End Date	Duration
NGOs & Donor Funded Projects Tax	30 June 2026	11 August 2026	6 Weeks
Public Sector Tax Administration	30 June 2026	11 August 2026	6 Weeks
Real Estate Taxation	12 August 2026	23 September 2026	6 Weeks
Financial Services Sector Taxation	12 August 2026	23 September 2026	6 Weeks
Insurance Industry Taxation	24 September 2026	05 November 2026	6 Weeks
MNOs & Digital Services Taxation	24 September 2026	05 November 2026	6 Weeks
Extractive & Mining Industry Taxation	06 November 2026	18 December 2026	6 Weeks